

CONTENTS

Page

Life Science 2

A Living Dragon.....	6
When the Bears Turned Green.....	8
How Smart Are Animals?.....	10
The Lungfish	12
Hide and Seek	14
Orcas.....	16
Ants That Look for Leaves	18
A Strange World Under the Sea.....	20
Think Before You Eat.....	22
Your Teeth and You	24
Black and White All Over.....	26
Meet the Cactus	28
Sugar Snap Peas	30
The Ginkgo Tree.....	32

Earth-Space Science..... 34

Spinning Winds.....	38
A Black Graveyard for Animals	40
Moon Secrets.....	42
A Nosy Neighbor.....	44
Hurricane Watch.....	46
Meteorites.....	48
Mountains of Ice.....	50
The <i>Alvin</i>	52
What Did Dinosaurs Do?.....	54

Physical Science.....	56
Hang Gliding.....	60
Hot-Air Balloon.....	62
Lasers in Medicine.....	64
What Do You Think?	66
How a Battery Works	68
Dangerous Rays	70
Maglev: The Flying Train.....	72
The Uses of Petroleum	74
 Environmental Science	 76
The Bald Eagle Is Soaring.....	80
Solar Heat.....	82
Fuel for Tomorrow.....	84
Acid Rain	86
We Need a Pollution Solution.....	88
Helping Mother Nature	90
Charged-up Cars	92
Bottle Bills Reduce Waste	94
Mountain Gorillas and Dian Fossey	96
 Bibliography	 98
Record Keeping.....	100
Metric Tables	103

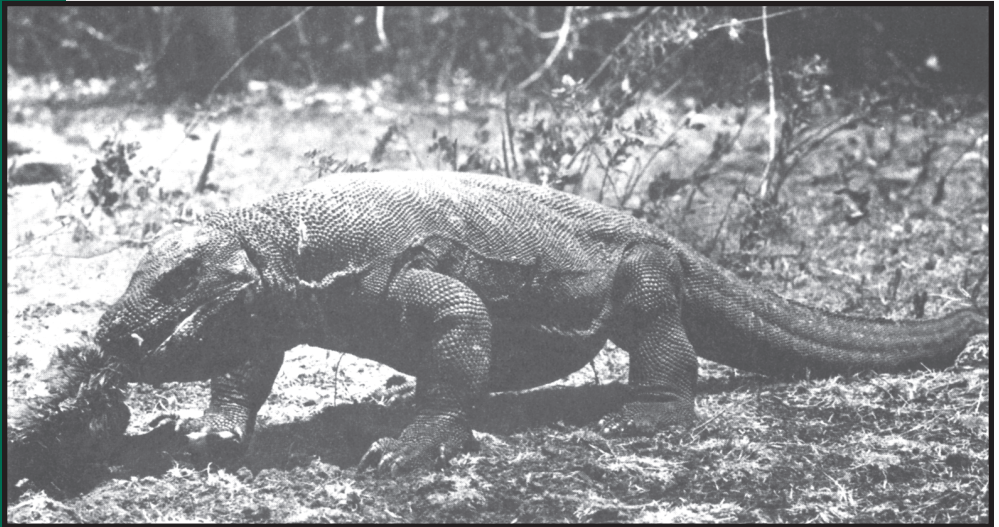
A Living Dragon

*Are there
really living
dragons?*

It is morning on the island of *Komodo* (kə mō' dō) in the Indian Ocean. Out of a cave comes a giant animal. It sticks out a long forked tongue. Inside its red mouth are rows of teeth. Is this a dream? No! There is such an animal. It is called the Komodo dragon.

The Komodo dragon is a *monitor lizard* (mōn'ī tər liz'ərd), the largest of all known lizards. It can grow as long as eleven feet and weigh as much as two people. The Komodo looks for food by smelling with its tongue. This giant lizard can eat pigs, deer, goats, and monkeys.

For hundreds of years, people have talked about dragons as make-believe. Then, in 1912, people heard about the Komodo dragon. They thought it too was make-believe. But first four Komodo skins and then photographs were brought back from the island. Then people knew that the Komodo dragon was real.



QUESTIONS

1. The *monitor lizard* is
 - a. a small lizard with many rows of teeth.
 - b. a make-believe lizard.
 - c. the largest known lizard in the world.

2. The Komodo dragon uses its tongue to
 - a. catch snakes.
 - b. scare people.
 - c. smell food.

3. People may not have believed the Komodo dragon was real because
 - a. they had never seen one themselves.
 - b. the dragon was not alive until 1912.
 - c. the dragon never came out of its cave.

4. Which of the following happened *first*?
 - a. People saw photographs of the Komodo.
 - b. Komodo skins were brought back from the island.
 - c. People knew that the Komodo was real.

5. According to the story, which of the following statements is *true*?
 - a. All the stories about the Komodo dragon were make-believe.
 - b. Sometimes what we think is make-believe turns out to be real.
 - c. People who saw the Komodo dragon were dreaming.

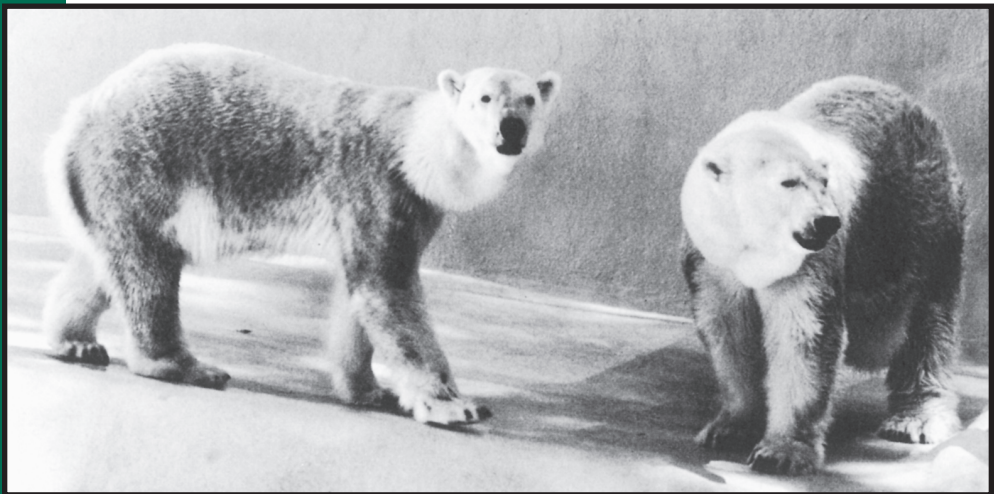
When Bears Turned Green

*Read all
about the
zoo bears
that turned
green.*

Polar bears are supposed to be white. They live in the cold northern parts of the world. Their white fur makes them almost invisible in the snow and ice.

But three bears living in a zoo turned green. That's right! The big white bears turned as green as grass. Scientists wondered why it had happened. They cut away some of the bears' fur and looked at it carefully. There were tiny plants called algae (ăl'jē) inside the bears' fur. Algae are plants that grow mostly in water, and they do not have true leaves or flowers.

Some kinds of algae can be green, and it was this algae that changed the color of the bears' fur. Scientists believe the algae were living in the small pool used by the bears. When the bears went for a swim, the algae moved into the bears' fur. The algae were not hurting the bears. The bears were not hurting the algae. In fact, they lived together happily. But green polar bears were a strange sight!



QUESTIONS

1. *Algae* are
 - a. a kind of bear.
 - b. tiny plants.
 - c. plants with flowers.
2. *Algae* live
 - a. in the water.
 - b. in dry places.
 - c. only in zoos.
3. The bears turned green because
 - a. they were sick.
 - b. they went swimming too often.
 - c. there were plants in their fur.
4. Polar bears can live safely in ice and snow because
 - a. their white color makes it hard for hunters to see them.
 - b. they can see hunters coming from far away.
 - c. people do not hunt where there is ice and snow.
5. In this story, where were the *algae* before they got into the bears' fur?
 - a. in the snow
 - b. in the flowers
 - c. in the pool