

# TABLE OF CONTENTS

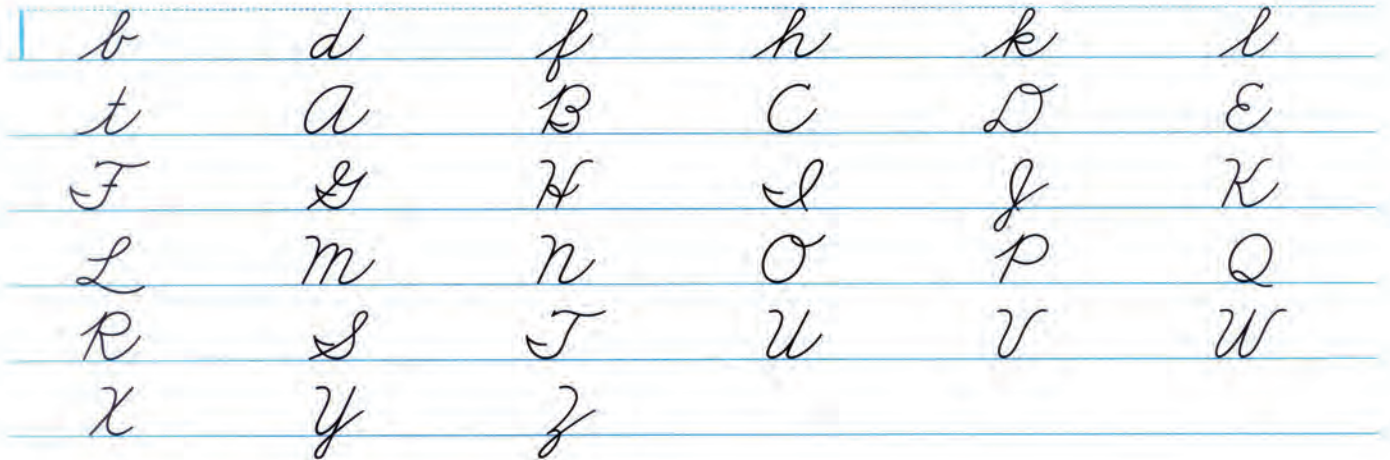
<b>Page</b>	<b>Content</b>	<b>Page</b>	<b>Content</b>
3	Mastering cursive writing	33	Review: m M, n N, o O, p P
4	Basic cursive strokes	34	Key to legibility: Size
5	Warm-up: Backward oval/Paper Position	35	Lowercase and uppercase q Q
6	Undercurve	36	Lowercase and uppercase r R
7	Warm-up: Backward oval/pencil position	37	Lowercase and uppercase s S
8	Downcurve	38	Lowercase and uppercase t T
9	Forward oval/overcurve	39	Review: q Q, r R, s S, t T
10	Key to legibility: Size	40	Manuscript maintenance
11	Lowercase and uppercase a A	41	Lowercase and uppercase u U
12	Lowercase and uppercase b B	42	Lowercase and uppercase v V
13	Lowercase and uppercase c C	43	Lowercase and uppercase w W
14	Lowercase and uppercase d D	44	Lowercase and uppercase x X
15	Review: a A, b B, c C, d D	45	Lowercase and uppercase y Y
16	Manuscript maintenance	46	Lowercase and uppercase z Z
17	Lowercase and uppercase e E	47	Review: u U, v V, w W, x X, y Y, z Z
18	Lowercase and uppercase f F	48	Retracing
19	Lowercase and uppercase g G	49	Practice: Retracing
20	Lowercase and uppercase h H	50	Numerals
21	Review: e E, f F, g G, h H	51	Writing dates
22	Key to legibility: Slant	52	Key to legibility: Shape
23	Lowercase and uppercase i I	53	Undercurve joinings
24	Lowercase and uppercase j J	54	Checkstroke joinings
25	Lowercase and uppercase k K	55	Lowercase checkstroke joinings
26	Lowercase and uppercase l L	56	Editing and rewriting
27	Review: i I, j J, k K, l L	57	Overcurve joinings
28	Key to legibility: Spacing	58	Uppercase joinings
29	Lowercase and uppercase m M	59	Writing on unlined paper
30	Lowercase and uppercase n N	60	Practice: Slant
31	Lowercase and uppercase o O	61	Line quality
32	Lowercase and uppercase p P	62	Speed and legibility
		63	Improving letter shape
		64	Final evaluation



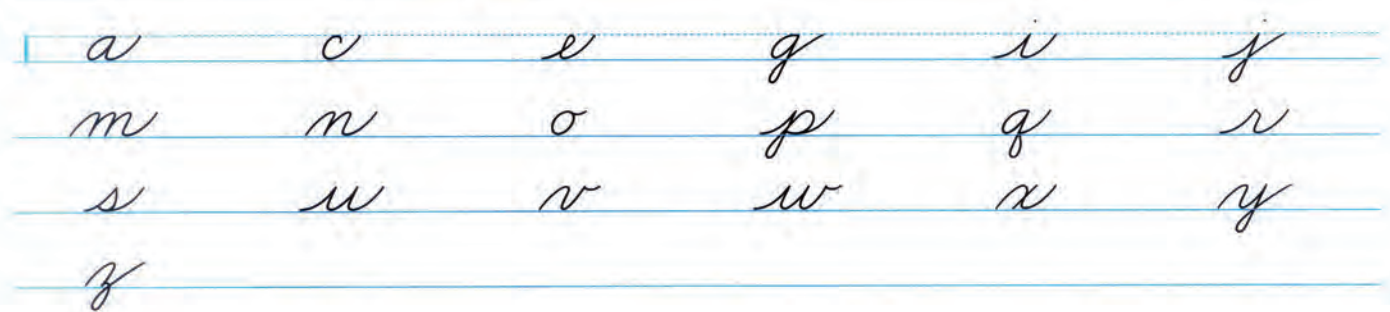
# MASTERING CURSIVE WRITING

You are now ready for "adult" cursive writing. With this form of writing you will not have a midline to guide you and the height of letters will change. Here is a preview:

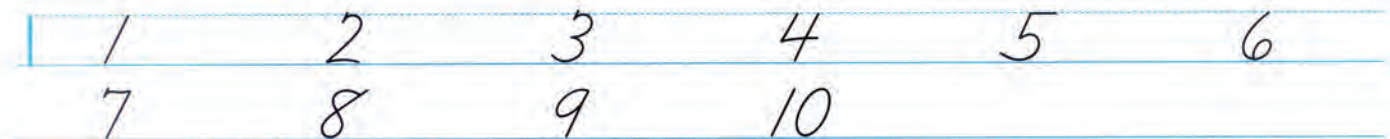
Tall letters, including all uppercase letters, do not touch the headline.



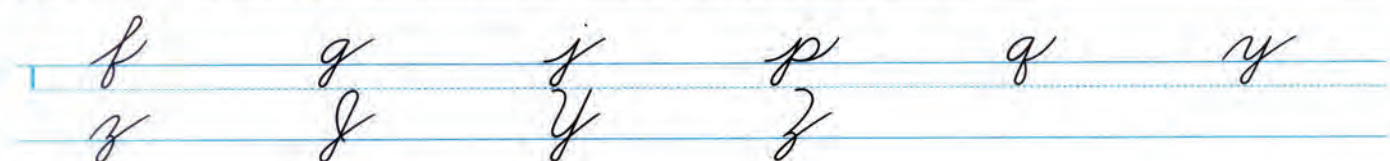
Short letters are one-half the height of tall letters.



Numerals are the height of tall letters.



Descenders reach approximately one-third the space below the baseline.



# BASIC CURSIVE STROKES



**Short Undercurve**  
Curve under and up.



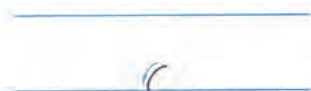
**Short Overcurve**  
Curve up and right.



**Tall Undercurve**  
Curve under and up.



**Tall Overcurve**  
Curve up and right.



**Short Downcurve**  
Curve left and down.



**Short Slant**  
Slant left.

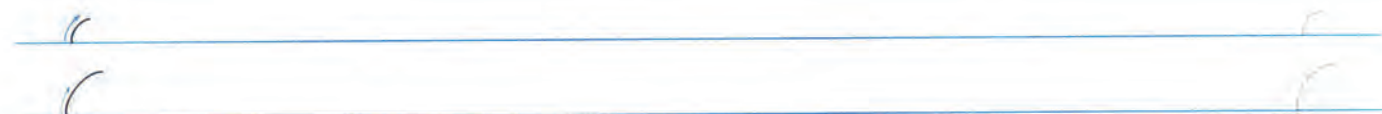


**Tall Downcurve**  
Curve left and down.



**Tall Slant**  
Slant left.

Practice writing the basic strokes below.





## BACKWARD OVAL

Practice tall backward ovals.



Practice short backward ovals.



Practice the backward oval and check for proper slant.



## PAPER POSITION (Cursive)

