

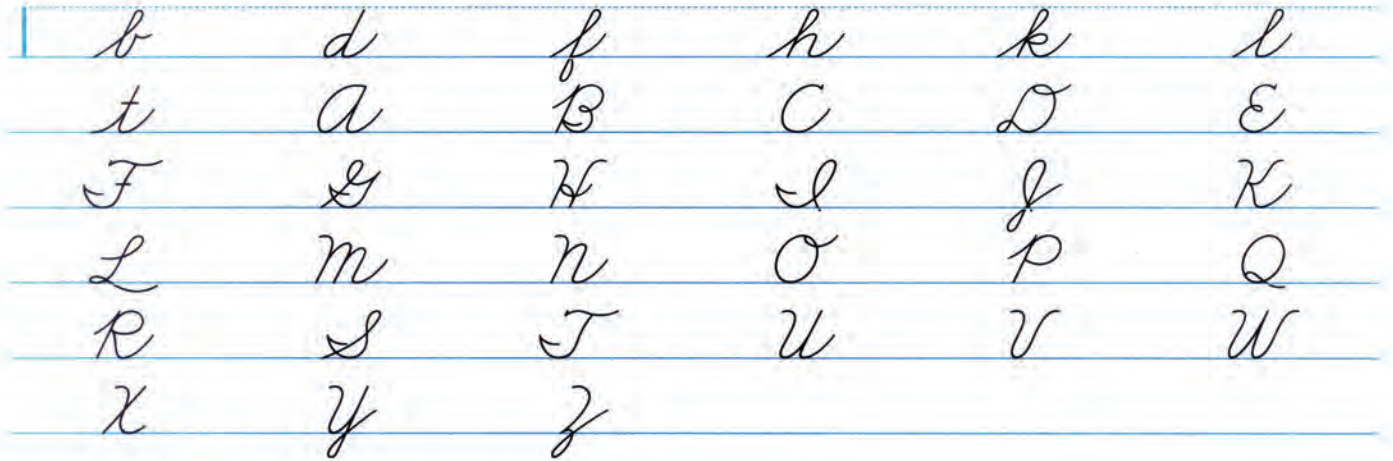
TABLE OF CONTENTS

Page	Content	Page	Content
3	Maintaining cursive writing	31	Evaluation: Slant
4	Writing basic strokes with rhythm	32	Practice: Common beginnings
5	Writing basic strokes with rhythm/Paper position	33	Practice: Common endings
6	Lowercase undercurve beginning letters	34	Practice: Handwriting and spelling
7	Lowercase downcurve beginning letters/Pencil position	35	Practice: Line quality
8	Lowercase overcurve beginning letters/Shifting the paper	36	Practice: Common beginnings
9	Review: Lowercase letters	37	Practice: Common endings
10	Practice: Manuscript maintenance	38	Practice: Shape/Posture for writing
11	Uppercase curve forward letters	39	Evaluation: Shape
12	Uppercase downcurve letters Uppercase overcurve letters	40	Practice: Handwriting and spelling
13	Uppercase undercurve-slant letters Uppercase doublecurve letters	41	Practice: Common beginnings
14	Uppercase letters with loops	42	Practice: Manuscript maintenance
15	Review: Uppercase letters	43	Practice: Common endings
16	Undercurve joinings	44	Practice: Size
17	Undercurve joinings	45	Evaluation: Size
18	Overcurve joinings	46	Practice: Handwriting and spelling
19	Checkstroke joinings	47	Practice: Double letters
20	Checkstroke joinings	48	Practice: Numerals
21	Review: Lowercase joinings	49	Practice: Common endings
22	Retrace	50	Practice: Handwriting and spelling
23	Ascending and descending letters	51	Evaluation: Keys to legibility
24	Spacing letters and sentences	52	Practice: Double letters
25	Spacing words	53	Practice: Common beginnings
26	Evaluation: Spacing	54	Practice: Writing with rhythm
27	Uppercase joinings	55	Practice: Writing with rhythm
28	Practice: Handwriting and Spelling	56	Practice: Writing on unlined paper
29	Practice: Common endings	57	Practice: Double letters
30	Practice: Slant	58	Practice: Speed and legibility
		59	Evaluation: Speed and legibility
		60	Uppercase letters without joinings
		61	Practice: Shape
		62	Homonyms
		63	Writing contractions
		64	Final Evaluation

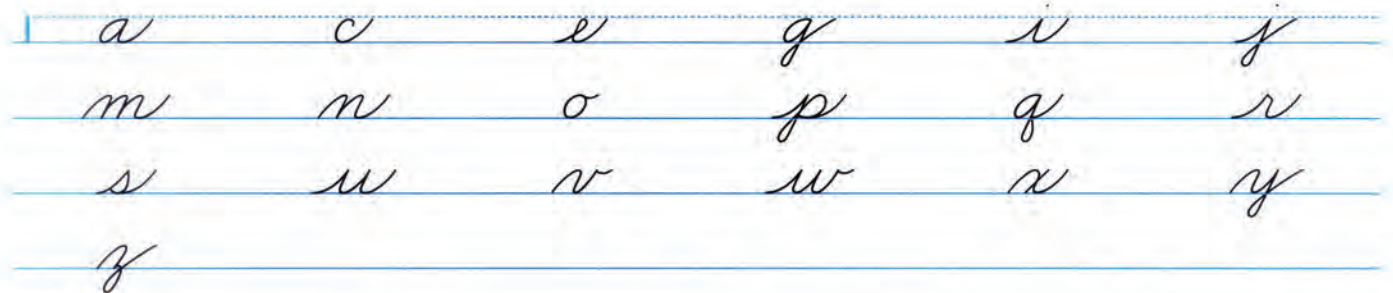
MAINTAINING CURSIVE WRITING

You are now writing "adult" cursive. With this form of writing you do not have a midline to guide you and the height of letters change. Here is a review:

Tall letters, including all uppercase letters, do not touch the headline.



Short letters are one-half the height of tall letters.



Numerals are the height of tall letters.



Descenders reach approximately one-third the space below the baseline.



PRACTICE

WRITING BASIC STROKES WITH RHYTHM

Good cursive writing is smooth and flowing. Practice your writing rhythm.
Trace and write the backward oval.



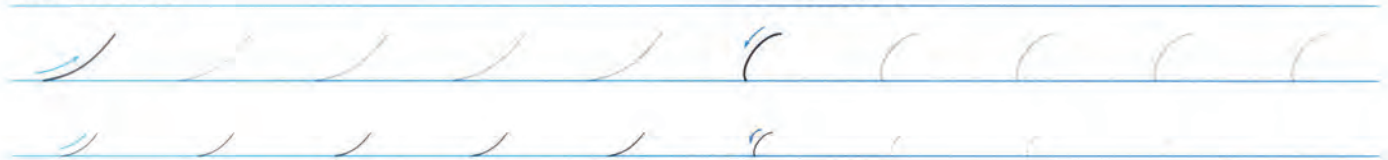
Trace and write the forward oval.



Trace each stroke five times.

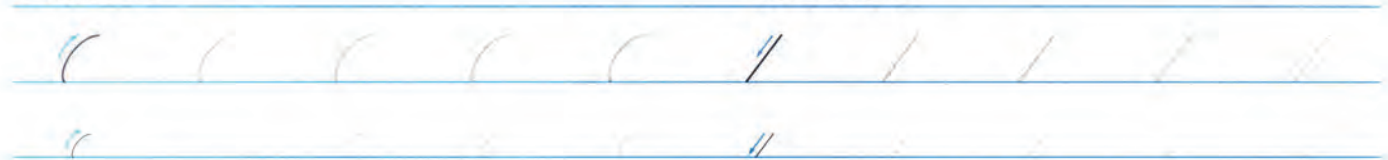
Undercurve

Downcurve

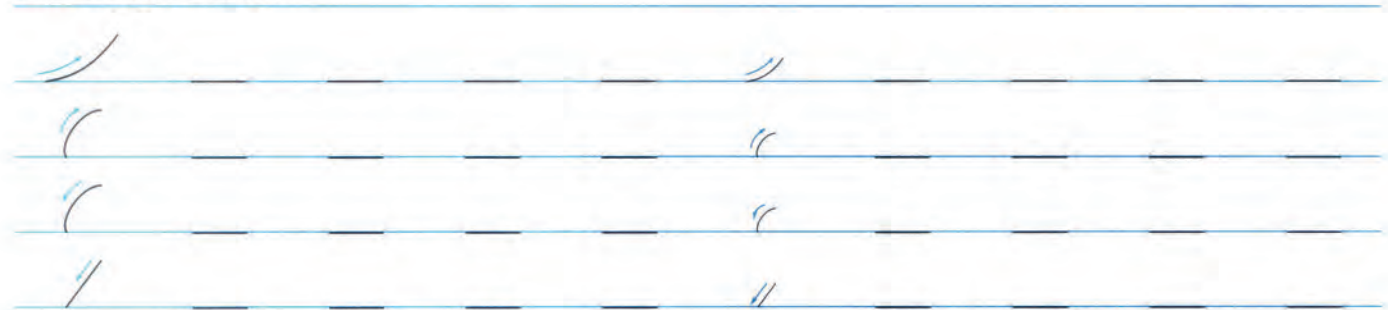


Overcurve

Slant stroke

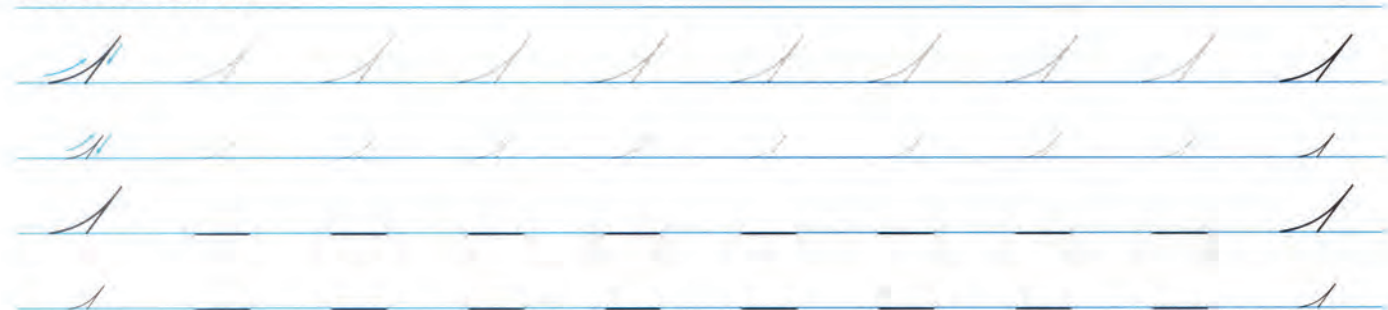


Write each stroke.



Trace and write these motions.

Undercurve-slant



WRITING BASIC STROKES WITH RHYTHM

PRACTICE

Trace and write these motions.

Overcurve-slant

Handwriting practice lines for the overcurve-slant stroke. The first line shows a cursive 'm' with a blue arrow indicating the downward slant. The following three lines show the cursive letters 'n', 'v', and 'x' written in a slanted, overcurved style.

Undercurve-loop-slant

Handwriting practice lines for the undercurve-loop-slant stroke. The first line shows a cursive 'l' with a blue arrow indicating the downward slant. The following three lines show the cursive letters 'l', 'l', and 'l' written in a slanted, undercurved style with loops.

Slant-undercurve

Handwriting practice lines for the slant-undercurve stroke. The first line shows a cursive 'a' with a blue arrow indicating the downward slant. The following three lines show the cursive letters 'd', 'e', and 'i' written in a slanted, undercurved style.

PAPER POSITION (Cursive)

